



WATERPROOFING

Sikadur Combiflex[®] SG System

HIGH PERFORMANCE JOINT AND CRACK SEALING SYSTEM

BUILDING TRUST



HIGH PERFORMANCE JOINT AND CRACK SEALING SYSTEM

THE Sikadur Combiflex® SG System is the second generation of the globally renowned Sikadur Combiflex® range, with improved adhesion and performance characteristics and approvals for use in contact with drinking water. This unique system consists of the weldable Sikadur Combiflex® SG tapes and established Sikadur® adhesives. It is designed for use as a joint and crack waterproofing system in all types of structures, mainly in watertight concrete structures.

The Sikadur Combiflex® SG System is a high performance joint and crack sealing solution for:

- Movement joints
- Construction joints
- Pipe penetrations
- Cracks

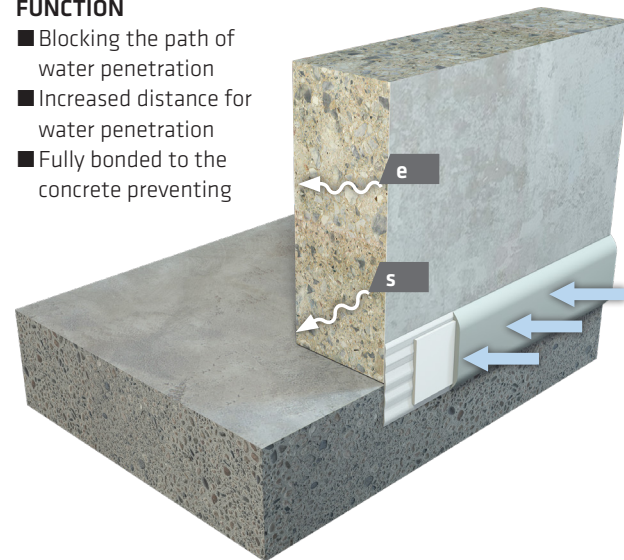
The system allows variable and high levels of movement in one or more directions, whilst maintaining a watertight seal.

MAIN ADVANTAGES:

- Versatile system suitable for many difficult situations
- Advanced adhesion to many different substrate materials
- Extremely flexible-high joint / crack bridging ability
- Good resistance to many different chemicals
- Can be used in contact with potable/drinking water
- Use for both cold and hot water applications and easy to install
- Suitable for dry and damp concrete surfaces
- Performs well within a wide range of temperatures
- Weathering and UV-resistant
- Available with normal and rapid hardening grades of the adhesive
- Root penetration resistant

FUNCTION

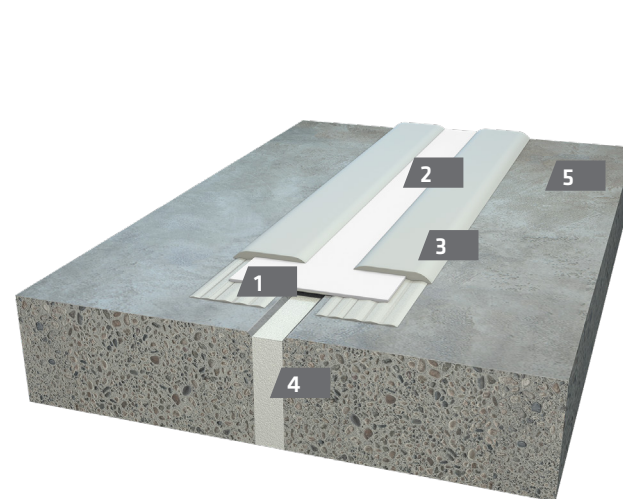
- Blocking the path of water penetration
- Increased distance for water penetration
- Fully bonded to the concrete preventing



$s \gg e$

e = Water penetration (EN 206)
s = Increase length for water penetration

Sikadur Combiflex® SG SYSTEM – BUILD-UP



e.g: Movement joint

- 1 Base layer Sikadur® Adhesive
- 2 Sikadur Combiflex® SG Tape (sealing tape with clear expansion zone)
- 3 Top layer Sikadur® Adhesive
- 4 Joint filler
- 5 Concrete

TYPICAL APPLICATIONS

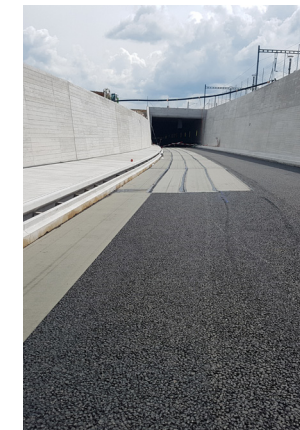
THE Sikadur Combiflex® SG System is versatile and suitable for use wherever water and moisture can penetrate into the structure from the outside.

SEALING ALL TYPES OF JOINTS AND CRACKS IN MANY DIFFERENT STRUCTURES AND APPLICATIONS INCLUDING:



BASEMENTS

- Water tightness with high durability
- Easy to control / repair
- Independent of concreting works
- High joint movement capacity



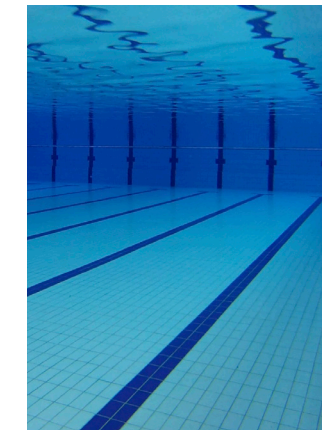
BRIDGES / TUNNELS

- De-icing salt resistance
- UV resistant Tunnel Ventilation Ducts
- Airtight
- Accommodates variable joint widths



DRINKING (POTABLE) WATER TANKS

- Approved for use in contact with drinking water
- Long-term water resistance
- Ideal for new and repair works
- Easy to control / repair



SWIMMING POOLS

- Resistance to ozone, chlorine and UV light
- Easy to clean
- Non abrasive to skin



STRUCTURAL REPAIRS

- Watertight crack sealing
- Resistant to water pressure from both faces / sides of the structure



SEWAGE TREATMENT PLANTS

- Resistant to sewage
- Good abrasion resistance
- Independent of concreting work
- High joint movement capacity



GROUND WATER PROTECTION

- Chemically resistant
- High environmental security
- Watertight sealing



FACADE JOINTS

- High joint movement capacity
- Overpaintable (adhesive)
- External weathering resistant
- UV light resistant

Sikadur Combiflex® SG System FOR BASEMENT



1



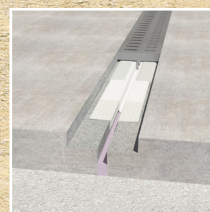
Construction joints

2



Movement joints

3



Flush installation

4



Steel support for
joints with negative
pressure

5



Cracks

6



Connection joints

7



Pipe penetration

Sikadur Combiflex® SG System FOR DRINKING WATER-RESERVOIR



- 1 Construction joints
- 2 Column detail
- 3 Pipe penetration
- 4 Connection joints concrete-steel
- 5 Cracks

Sikadur Combiflex® SG System – PRODUCT-RANGE

Sikadur Combiflex® SG TAPE

Sikadur Combiflex® SG Tapes are flexible, preformed waterproofing tapes, based on modified flexible Polyolefin (FPO), with excellent adhesion to the Sikadur® epoxy adhesives.

Sikadur Combiflex® SG TYP P

Characteristics [mm]	Sikadur Combiflex® SG-10 P	Sikadur Combiflex® SG-20 P
Tape thickness	1	2
Tape width	100, 150, 200, 250, 300, 400, 500, 1000, 2000	150, 200, 250, 300, 400, 500, 1000, 2000
Tape length	25	25

Sikadur Combiflex® SG TYP M

With temporary red middle strip for easier application in movement joints.

Characteristics [mm]	Sikadur-Combiflex® SG-10 M	Sikadur-Combiflex® SG-20 M
Tape thickness	1	2
Tape width	100, 150, 200, 250, 300	150, 200, 250, 300
Tape length	25	25



Sikadur® ADHESIVES

To achieve a watertight and durable connection between Sikadur Combiflex® SG tapes and the substrate, Sikadur® epoxy resin based adhesives are used.

Sikadur® Combiflex® CF Adhesive



Grey 2-component epoxy resin based

CHARACTERISTICS & ADVANTAGES

- Optimum workability and ease of finishing
- Provides a smooth surface finish
- Normal and rapid hardening grades available

Packaging

6 kg units (A+B) combined pack or
20 kg units part A
10 kg units part B

Sikadur®-31 DW



Grey 2-component epoxy resin based

CHARACTERISTICS & ADVANTAGES

- For installation where approval for contact with potable / drinking water is required
- Normal and rapid hardening grades available
- Various drinking water certificates

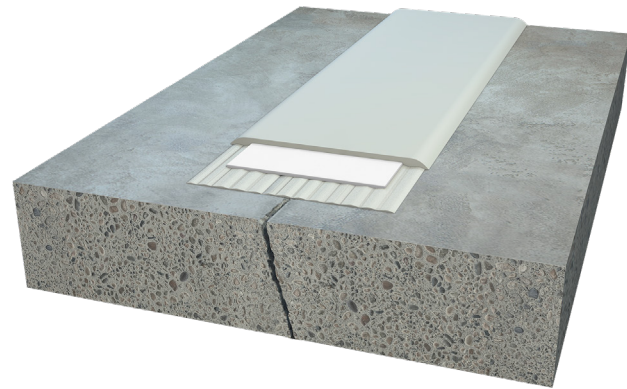
Packaging

6 kg units (A+B) combined pack
30 kg units part A
10 kg units part B



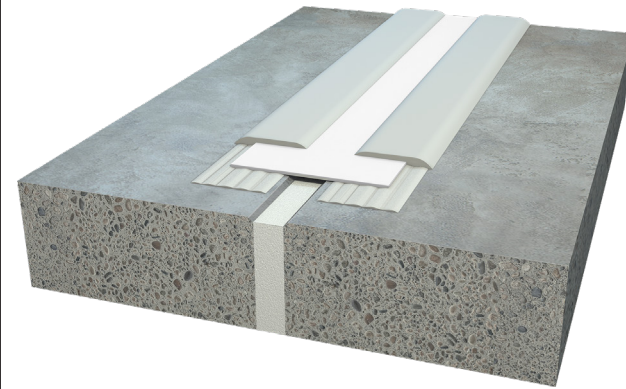
TYPICAL AREAS OF USE

CONSTRUCTION JOINTS AND STATIC CRACKS



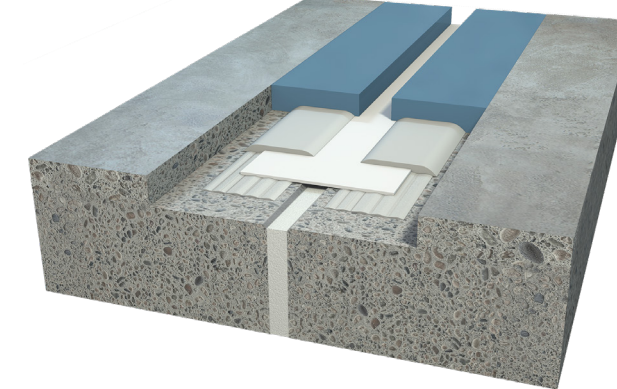
Construction joints are formed by the operational subdivision of structures into sections, such as for the daily completion of concreting stages (also called "day work joints").

MOVEMENT JOINTS



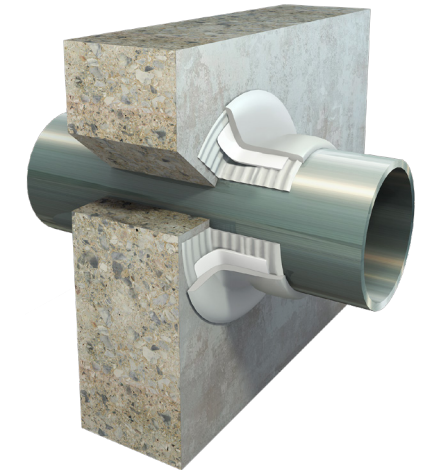
Movement or expansion joints separate structural elements and compensate for movements caused by the effects of heat, ground settlement or loads imposed on the structure.

CONCEALED OR FLUSH INSTALLATION



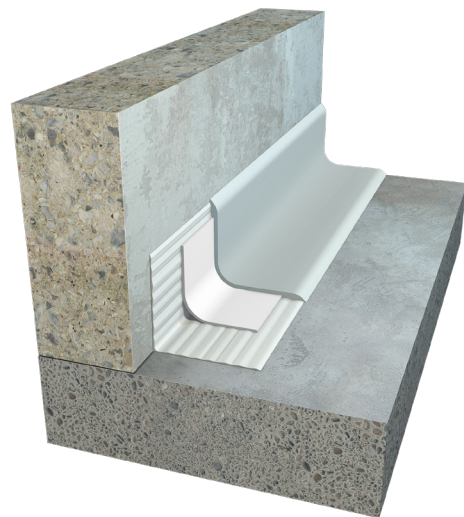
Typical for use in floor joint.

PENETRATION DUCT OR PIPE, COLLARS



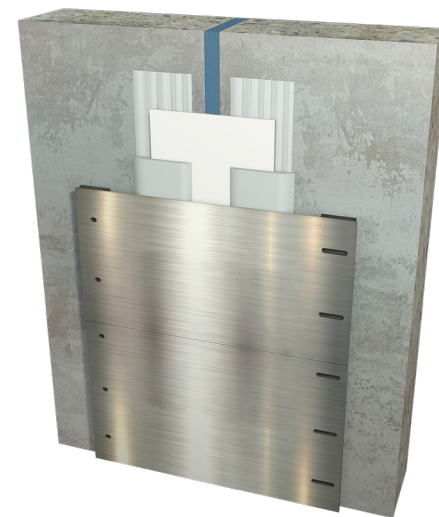
Basement wall with power and water services entry ducts.

ANGLED / COVED INSTALLATION



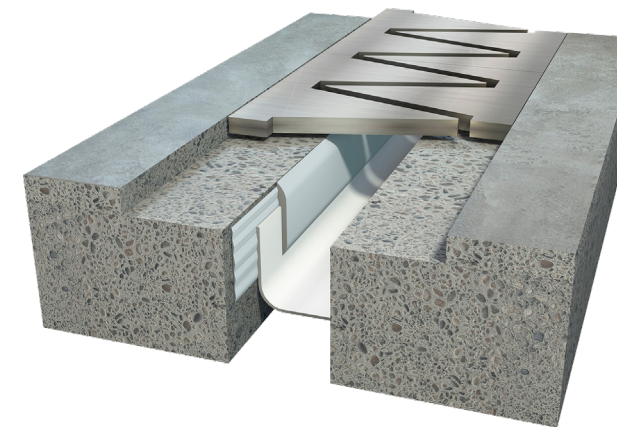
Where there is mechanical impact anticipated, the Sikadur Combiflex® SG Tape should be protected by filling behind the coving and additional surface protection as necessary.

SUPPORT FOR JOINTS WITH NEGATIVE PRESSURE



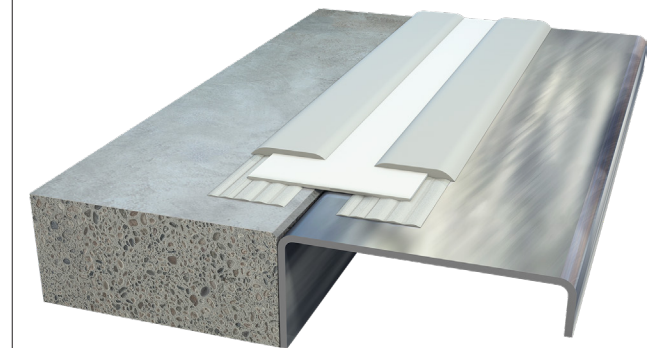
E.g. external basement walls. For exposure to negative water pressure from outside, the Sikadur Combiflex® SG Tape must be secured with a steel plate fixed on one side of the joint.

CARRIAGEWAY JOINTS



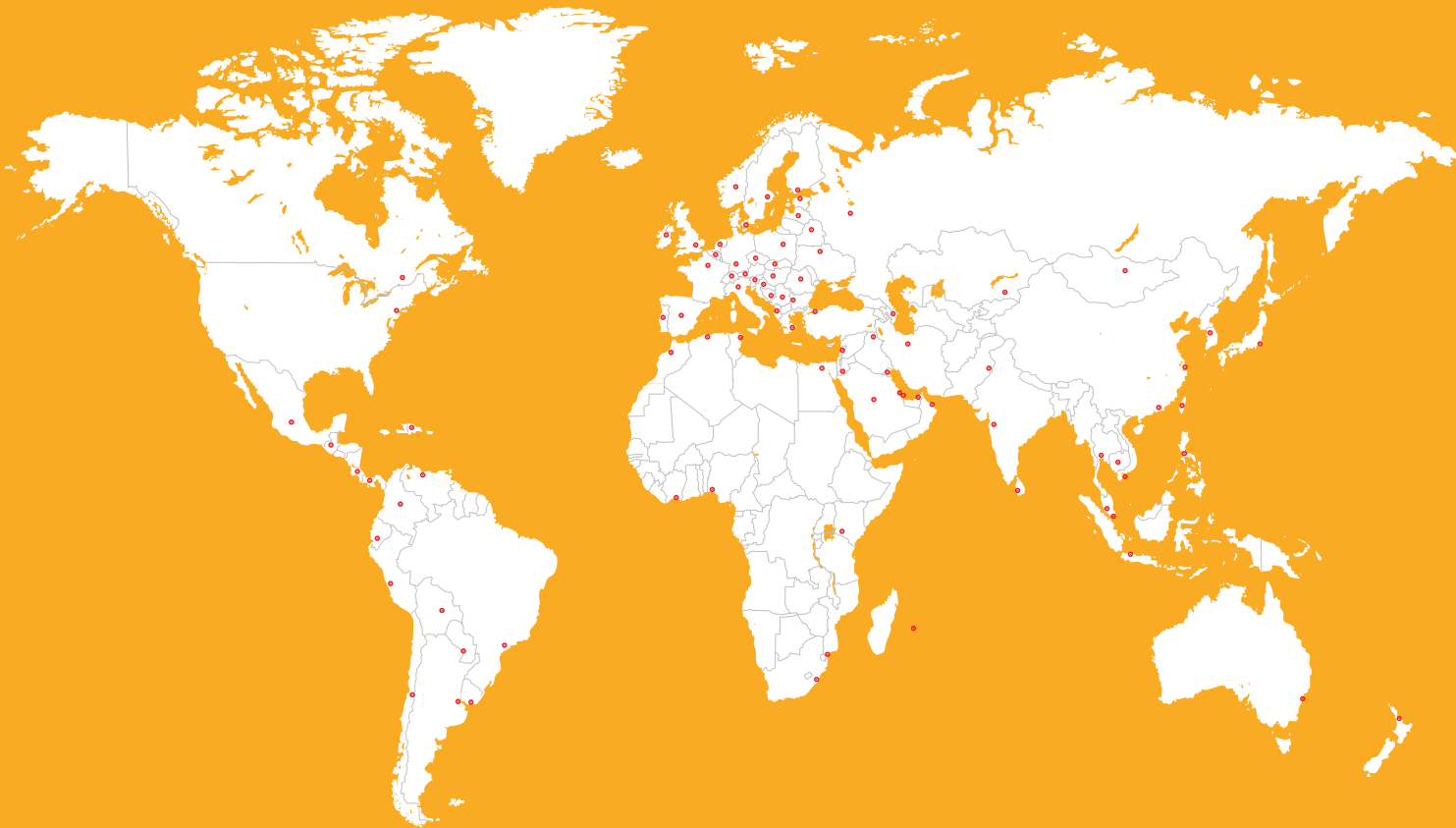
Typical for use on bridge deck joints or on multi-storey car park deck joints.

CONNECTION JOINTS



E.g. connections to lift shafts, steel beams etc.

PREZENCË GLOBALE - BASHKËPUNIM LOKAL



SIKA ALBANIA SHPK

Sika AG u themelua në 1910 më seli në Zvicër dhe është një kompani lëndësh kimike të posaçme me pozicion kryesues në zhvillimin dhe prodhimin e sistemeve dhe produkteve për ngjitje, izolim, hidroizolim, përforcim dhe mbrojtje në sektorin e ndërtimit dhe industrinë e mjeteve motorike të transportit. Linjat e produkteve të Sika-s përmbajnë aditivë betoni, llaçe, izolues dhe adezivë, sisteme përforcimi të strukturës, dysheme industriale si dhe gjithashtu sisteme për tarracat/çatitë dhe hidroizolimi.

Sika Albania u themelua në 2014. Që atëherë është kthyer në zgjedhjen e parë të inxhinierit/ndërtuesit. Sjellja në treg e materialeve inovative, cilësia e garantuar e produkteve të saj & suporti teknik që ofron janë karakteristikat kryesore që e dallojnë. Sika Albania, falë njohurive të saj teknike ka asistuar në ndërtimin e disa projekteve kryesore në vend gjatë viteve të fundit. Bashkëpunimi i ngushtë me sektorin teknik dhe tregtar mundëson transferimin e kësaj teknologjie në të gjithë Shqipërinë, deri në kantierin më të largët.

Ju lutemi lexoni skedën teknike të produktit përkatës përpara përdorimit.



SIKA ALBANIA SHPK

Rr. e Rinasit, Tirana Business Park
Ndërtesa 7, kati 4,
Tiranë, Shqipëri

Na kontaktoni

Telefon: +355 4 454 0070
Email: info@al.sika.com
Website: alb.sika.com

BUILDING TRUST

